

# Pentrunder<sup>®</sup> RS2

## Revolutionary one-of-a-kind integrated motors

Integrated 18 kW blade motor

Efficient slip clutches

Two integrated brushless feed motors; one for the saw arm rotation and one for travel along the track

Both feed motors can be used at the same time

Reversible blade rotation

## Designed with the customer in mind

All modules weighs less than 25 kg

## Light weight, easy to fit blade guard

Fully covering for best protection

Built-in vacuum connections

Easy handling with removable side pieces

Steel tube frame for rigidity

## One connector, one cable

Only standard hand tools needed for maintenance

## Shorter setup times

Quick disconnect coupling for blade

Easy fitting of blade

## Pentpak 3

Light weight, compact and durable

## Same track system as all other Pentrunder machines

Highest stability and best handling

Easy assembly of saw on track

Same track feet mounting distance as for the HF-saws

## TECHNICAL DATA

### BLADE INFO

Max saw blade diameter	1600 mm
Max cutting depth	715 mm
Max start Ø blade	830 mm

### MAX OUTPUT POWER

18 kW

### MAX TRAVEL SPEED

2.6 m/min

### WEIGHT

Saw head incl. motor	24.5 kg
Pentpak 3	15 kg

### MAX OUTPUT TORQUE

148 Nm

### MAX ARM SPEED

2.4 rpm/min

### SAW BLADE MOTOR

Integrated torque motor  
Reversible blade rotation

### SPINDLE SPEED UNDER LOAD

475 - 1125 rpm



# RS2 Wall saw & accessories



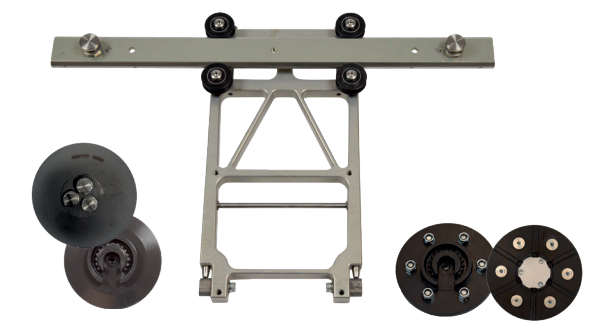
## Saw head and drive system

RS2-400	RS2 Wall saw
PP3	Pentpak 3
MCE-6	Machine cable and water hose, 9m
RRC-CE	Radio Remote Control, including cable and shoulder strap



## Accessories

89090100	Waist belt for remote control
89090200	Shoulder strap for remote control
89090300	Shoulder hook for remote control
DTD	Template, double
DTS	Template, single
TY-RS2	Transport trolley for RS2



## HF Blade flanges and guard holder

GH-RS2	Blade guard holder for GPRS & GFRS blade guards
QERS-60	Blade flange RS Ø60 Bore
QEFRS	Flush cutting flange Ø60, BC = 130/ 110/ 108"

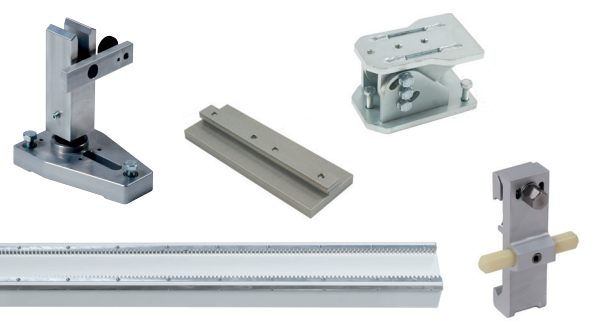


## HF Blade guard full

GPRS-8	Blade guard RS, Ø 800 mm
GPRS-12	Blade guard RS, Ø 1200 mm
GPRS-16	Blade guard RS, Ø 1600 mm

## HF Blade guard flush

GFRS-8	Blade guard flush RS, Ø 800 mm
GFRS-12	Blade guard flush RS, Ø 1200 mm



## TS Track and accessories

TS-Track	Lengths: 0.85 / 1.15 / 1.7 / 2.0 / 2.3 / 3.45 m
TF2S	Track foot
TFAB	Angle adjustable track foot
TSS300	Joint block
TP3	Track stop

**Pentrunder®**  
CONCRETE CUTTING SYSTEMS

Pentrunder - designed and manufactured by:  
Tractive AB | Gjutargatan 54 | 781 70 Borlänge | Sweden  
[www.pentrunder.com](http://www.pentrunder.com) | [contact@pentrunder.com](mailto:contact@pentrunder.com)